



WRB
WEST RAND BOX

PACKAGING CATALOG



WRB
WEST RAND BOX

**“Because we are
small enough to
care and big
enough to get the
job done”**

ABOUT US

At West Rand Box, we deliver high-quality, custom packaging solutions — from concept to final product. With a focus on tailored manufacturing and premium materials, we combine expert advice with hands-on service to create a box that's perfect for your product. Backed by ISO 9001:2015 certification and full POPIA compliance, we're your trusted partner in packaging — where quality meets precision.

OUR SERVICE

BOARD MANUFACTURING:

We ensure a consistent supply of high-quality, reliable board material to our converting plant.

PREMIUM MATERIALS

At WRB, we carefully select high-quality paper to ensure our products meet strong performance and consistency standards - without compromising on finish or durability.

BOX MANUFACTURING:

We manufacture a wide range of corrugated boxes using E-Flute, B-Flute, C-Flute, as well as single- and double-wall boards. Our offering includes sheet board converted into die-cut boxes for agricultural and industrial applications, as well as RSC boxes suitable for general industrial use.

PRINTING SERVICES:

We offer flexographic printing directly onto corrugated boxes, in up to 4 colours. Our equipment allows us to provide reliable print quality for branding and product presentation. We're committed to maintaining solid production standards and practical packaging solutions.

WHAT SETS US APART



100% INDEPENDENT CORRUGATED MANUFACTURER

We have full control over our operations, allowing us to offer flexible, customer-focused solutions.



COLLABORATIVE APPROACH

We don't just work for our clients; we work with them, understanding their needs on a deeper level to deliver truly tailored solutions.



ATTENTION TO DETAIL

We take great pride in our meticulous attention to detail, ensuring high-quality results every time. Driven by a pioneering spirit, we continuously explore new possibilities and develop innovative solutions that set us apart in the industry.

OUR STORY

With over 30 years of industry experience, West Rand Box has grown from a small Pretoria-based operation into an established corrugated packaging manufacturer. We are ISO 9001:2015 certified and hold a Level 4 BBBEE rating, reflecting our ongoing commitment to quality standards and transformation. Our experienced team operates from an 12,549 m² facility, where we manufacture a variety of packaging solutions using flexographic printing. With the support of our own delivery fleet, we're able to offer consistent and dependable service to our customers.

WHERE IT ALL BEGINS

THE PAPER

The strength and quality of cardboard starts with the type of paper used. High-performance packaging often uses 100% virgin Kraft paper, sourced from sustainably managed forests, known for its superior durability, tear resistance, and excellent printability. For more cost-effective or environmentally focused applications, fully recycled paper is also widely used—particularly for inner liners or where extreme strength is not required. Depending on the specific packaging requirements, different paper grades and weights (GSM) are selected to form the fluted core and outer liners of corrugated board. At times, a combination of virgin and recycled papers is used to balance performance, sustainability, and cost.



OUR FACTORY

Located in Kirkney, Pretoria, our facility offers 11,000 m² of covered production space, including a recently acquired adjacent warehouse. The site is equipped with machinery for board manufacturing, flexographic printing, and die-cutting, supporting the production of a wide range of corrugated packaging. Our layout is designed for efficient workflows and consistent output, allowing us to meet both standard and custom packaging requirements from a single location.



MANUFACTURING

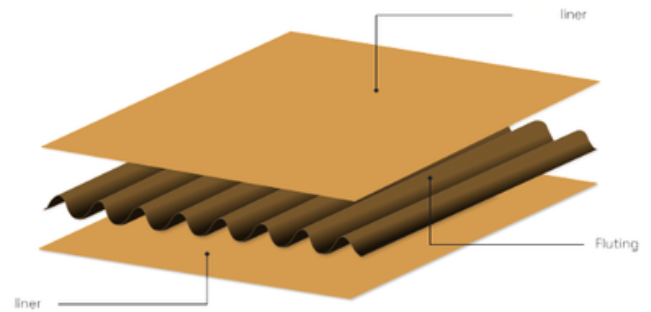
Corrugated board production starts with carefully selected rolls of virgin Kraft or recycled paper, graded for use as liners and fluting. These papers are loaded onto a corrugating machine, where the fluting medium is shaped using heated rollers and bonded with starch-based adhesive between the liners. Single-wall board consists of three layers (liner-flute-liner) Double-wall board has five layers (liner-flute-liner-flute-liner)The glued layers are cured using steam-heated plates, then cut into sheets or rolled for further conversion into boxes. This process forms the base material for strong, functional packaging.



READING BETWEEN THE LINES

BOARD MANUFACTURING

Corrugated cardboard is made up of three key components: a central fluted layer sandwiched between two flat paper liners—an outer and inner layer. During manufacturing, the fluted medium is bonded to each liner with adhesive, which locks the structure in place and provides the rigidity and stability that makes corrugated board strong, lightweight, and ideal for protective packaging.

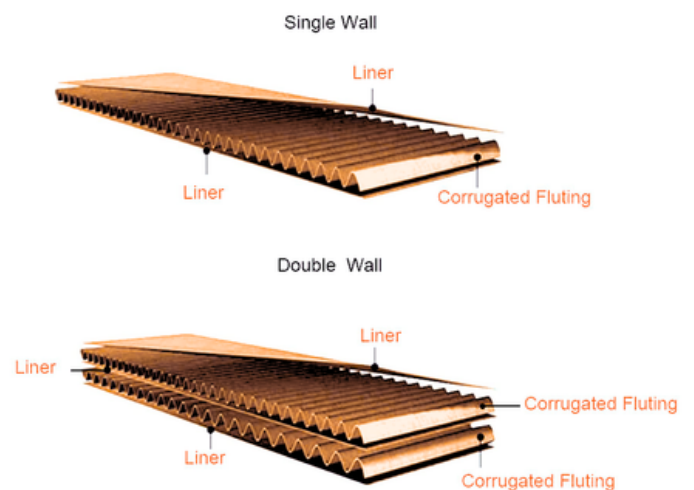


FLUTING

The flute type within corrugated board plays a key role in determining its strength, weight, and cost. As the heart and core of your box, the fluting provides structure and protection. Flutes vary in size—from fine E-flutes used for lightweight retail packaging, to coarser A or B-flutes ideal for transit and protective packaging. In double-wall board, combinations like EB or BC flutes provide enhanced rigidity for heavier products while ensuring reliable performance and durability.

BOARD COMPIATION

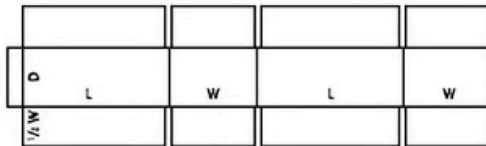
Corrugated board typically consists of two liners and a single fluting layer, known as single wall board, ideal for standard packaging needs. For added strength and rigidity, an extra fluting and liner layer can be added to create double wall board, making it well-suited for heavier, fragile, or high-value items that require extra protection during transport and handling.



WHAT WE DO BEST

Regular Slotted Carton (RSC)

All flaps have the same width, and the two outer flaps (normally the lengthwise flaps) are one-half the container's width, so that they meet at the center of the box when folded. If the product requires a flat, even bottom surface, or the protection of two full layers, a fill-in pad can be placed between the two inner flaps.

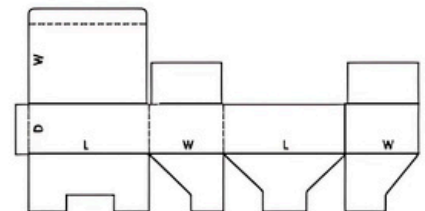


This is a highly efficient design for many applications. There is very little manufacturing waste. The RSC can be used for most products and is the most common box style.

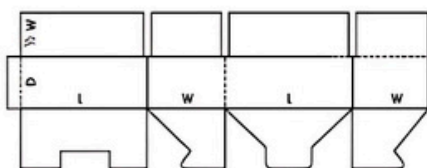


Tuck-in-HLock

The four flaps that form the bottom panel are die cut. To set up, the user folds the largest bottom panel first, then the two end panels. When the remaining bottom panel is folded and pressure is applied near the center, the flap "snaps" into the slot created by the other panels.



The style is convenient for small-volume shippers who do not have automatic set-up equipment. Because the bottom is not fully sealed, it may not be suitable for heavy products.



H-Block Bottom with RSC Top

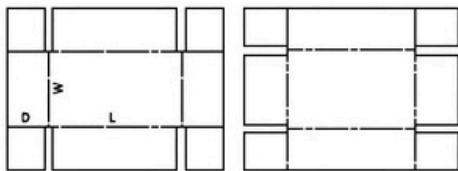
Same as the Tuck-in-HLock, replacing the tuck top configuration with RSC style flaps.



WHAT WE DO BEST

Telescope Boxes

Telescope boxes usually consist of a separate top, or top and bottom that fit over each other or a separate body. The International Fibreboard Casecode calls these boxes Telescope-Style. The truck and rail classifications call them Telescope Boxes if the cover extends over at least two-thirds of the depth, and Boxes with Covers if the cover extends over less than two-thirds of the depth.

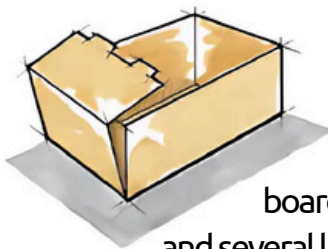
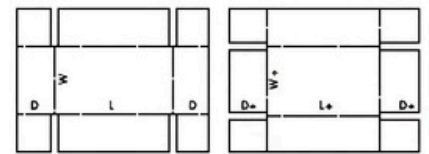


Trays, Design Style



Full Telescope Design Style Carton (FTD)

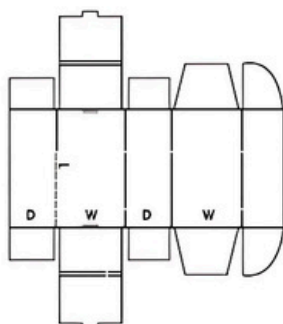
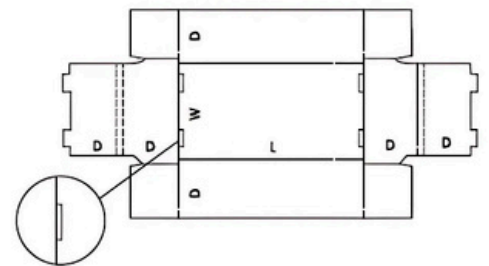
The two-piece box is made from two scored and slotted blanks (trays).



Roll End Tray, Walker Lock Tray, or Tray with Self Locking Ends

Formed from a single piece of combined board, the design features an unbroken bottom, and several layers of corrugated in the end panels.

Trays are not shipping containers, but they are frequently used as inner containers for parts, delicate produce, letter mail and other products, or as elements of display stands.



Roll End Tray with Locking Cover



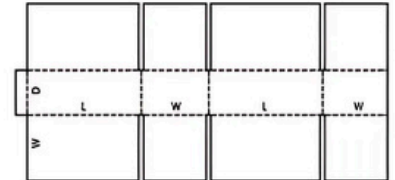


WHAT WE DO BEST

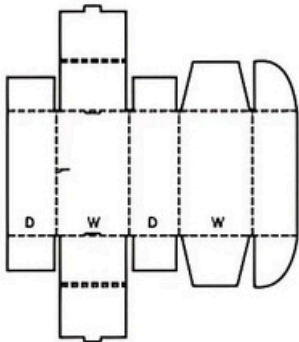


Full Over Laying Flap (FOLF)

All flaps have the same length (the width of the box). When closed, the outer flaps come within one inch of complete overlap.

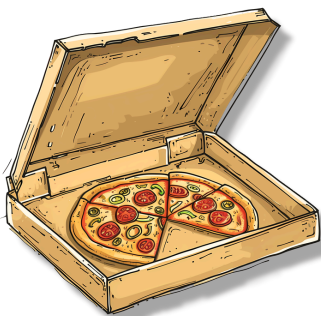
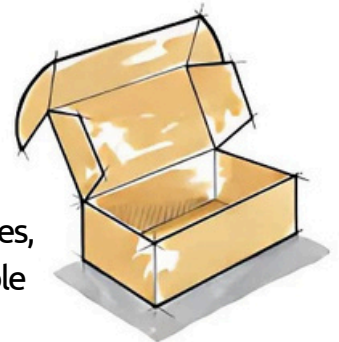


The style is especially resistant to rough handling. Stacked on its bottom panel, the overlapping flaps provide added cushioning. Stacked on its side, the extra thickness provides added stacking strength.



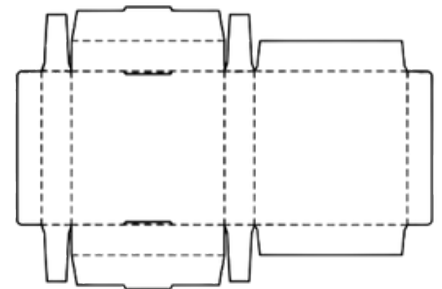
Caution Style

These styles are die-cut from a blank sheet of corrugated board and are folded to assemble a completely closed box. They often have locking hinges, handles, tabs, and perforated holes for easy, bendable sides incorporated into the design.



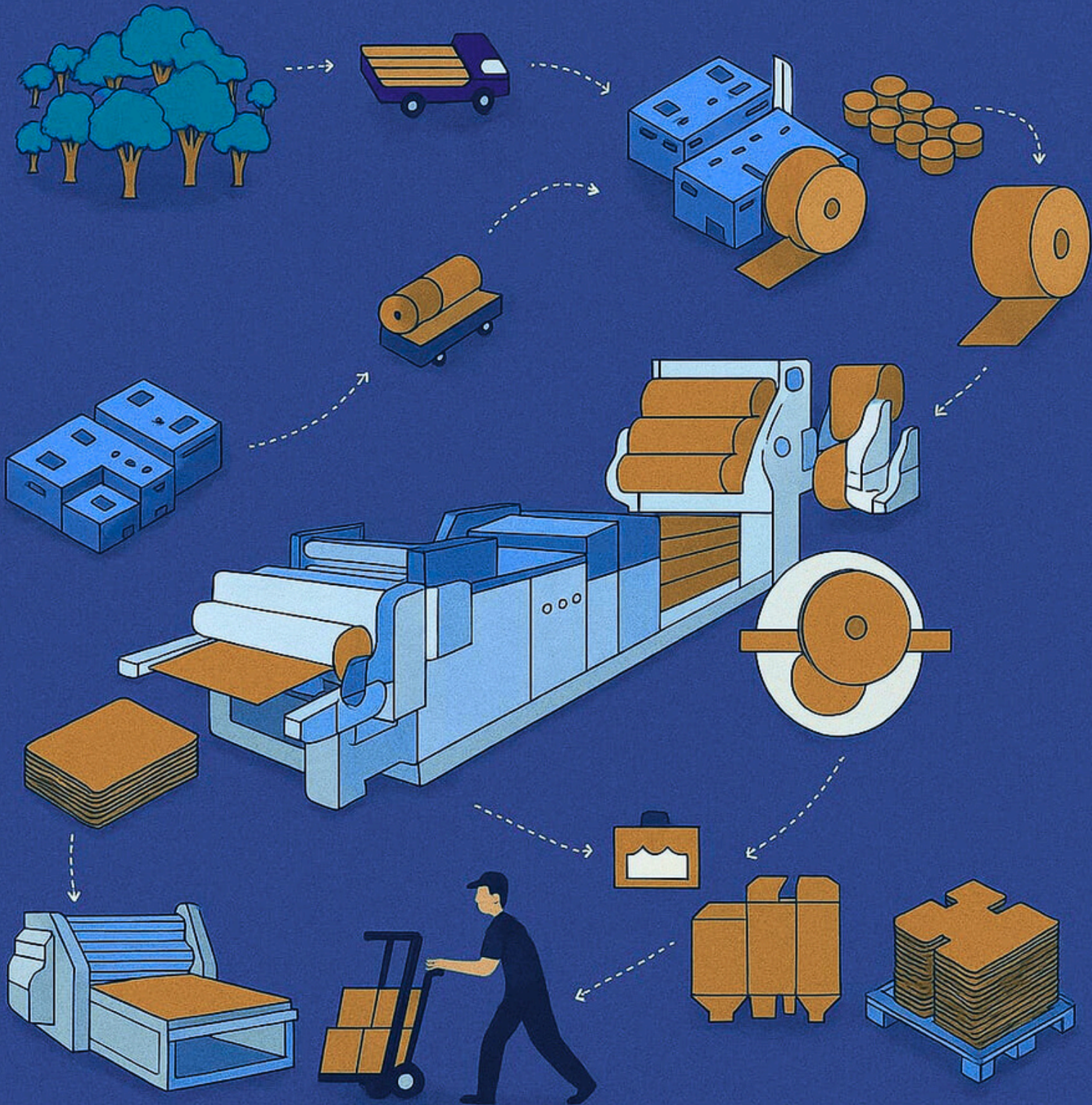
Pizza Boxes

Pizza boxes are typically die-cut from a single sheet of corrugated board and folded into a self-locking, flat-lid box. The design includes flaps and tabs that secure the lid without the need for glue or tape.



Ventilation holes are often incorporated to prevent steam build-up, and perforated lines may be added for easy folding and secure stacking.

FROM PAPER TO BOX



West Rand Box - Built for Performance, Designed with Purpose

TICKING ALL THE BOXES

SAMPLES & QUOTES

The cost of corrugated boxes is determined by several key factors, including the type and grade of paper, flute profile, and whether the board is single or double wall. Other considerations such as box size, printing specifications, order quantity, and custom features like die-cutting and stereotypes also affect pricing. By collecting samples to analyze board composition and artwork, and gaining a clear understanding of the client's requirements, we can provide accurate and tailored pricing.



TOOLING

A die cut is a process used in corrugated packaging to cut, shape, or crease cardboard into specific designs and forms, allowing for custom boxes tailored to various needs. In this process, flatbed die cutting uses a stationary die to press and cut sheetboard with high precision, making it ideal for complex or low-volume runs. Conversely, rotary die cutting involves a rotating cylinder with the die mounted on it, enabling faster, continuous cutting of corrugated material—perfect for high-volume production. Both methods allow for intricate designs, perforations, and folds, enhancing both the functionality and aesthetics of packaging.

BRANDING & ARTWORK

A stereo, or print plate, is a specially engraved plate used in flexographic printing to transfer ink onto corrugated board. Each stereo is custom-made for a specific design or artwork and must be precisely crafted to ensure sharp, high-quality prints. The process involves detailed engraving or molding, which requires skilled labor and specialized equipment. Because stereotypes are unique to each job and involve intricate production steps, their cost can be high—especially for complex or multi-color designs—making them a significant part of the overall printing expense.





WRB
WEST RAND BOX

SALES TERMS & CONDITIONS

Payment Terms and Conditions

The following payment terms apply to all orders:

Cash on Order (C.O.O.) Clients:

Clients are required to pay 100% upfront; no deposit payments or payment arrangements will be accepted. Please note that no design work or box manufacturing will commence without full payment. Lead times for your order are project-based and will be discussed in detail once the scope and requirements have been finalized.

30-Day Account Clients:

Clients must complete a credit application and receive approval before 30-day terms are available. Once approved, 30-day clients must submit an official company purchase order with each order placed.

VAT Notice:

All pricing provided is VAT exclusive

Design Services and Stereos (Print Plates)

The following outlines the process for design services and stereos:

Artwork Approval:

Once the artwork is finalized, it will be sent in PDF format along with the box layout. No stereo (print plate) will be ordered without full payment and a signed proof from the client.

Important:

Once proof is approved, no amendments can be made. Any changes to stereos after approval will be charged to the client's account.

Stereo Lead Time:

The lead time for stereos is 3 to 5 working days from the date of final artwork approval



WRB

WEST RAND BOX

SALES TERMS & CONDITIONS

Lead Time:

Standard lead time for cardboard boxes is 10 to 12 working days.

If printing is required and a new stereo must be ordered, the lead time will commence once the stereo has been delivered

Additional Policies

As we are a manufacturer and not a retail outlet, the following policies apply:

Supply Policy and Delivery Variance Guidelines:

Our company adheres to a standard 10% Over/Under-Supply Policy to account for minor variations in quantity due to custom manufacturing processes. Clients will be invoiced based on the actual quantity delivered. Please note that any printed boxes delivered in excess will be charged accordingly. We kindly ask that customers accept delivery despite slight variances, as adjustments will be reflected in the final invoice or credited where applicable.

Refund Policy for Printed, Custom, and Stock Boxes:

Printed Boxes: No refunds will be issued once the client has approved the artwork.

Custom Boxes: Refunds will only be approved if West Rand Box is at fault.

Stock Boxes: Refunds will only be processed if the boxes are returned in their original state and pass a quality inspection.

Refunds will be issued within 7 working days upon approval of the inspection. Thank you for your understanding

Pallet Charges & Refund Policy:

Pallet charges will be invoiced at cost and refunded upon return of the pallets.

To expedite the refund process, we kindly request you to provide us with a bank confirmation at your earliest convenience to ensure prompt handling of any refunds or credits. Thank you for your understanding and cooperation.



WRB
WEST RAND BOX

WHERE PRECISION MEETS PERFORMANCE - BUILT FOR DEFINED SPECS, VOLUME, AND CONTINUITY

Please note that West Rand Box is a corrugated box manufacturer, not a retail packaging supplier. **We manufacture custom boxes to order and primarily service medium to high-volume requirements.**

How we work:

- Manufacturing to order – we do not hold stock
- Minimum order quantities generally start from $\pm 750 \text{ m}^2$, **depending on size, specification, and printing**
- Tooling (dies and/or printing stereotypes) may be required and is a once-off cost, depending on the project
- Best suited to ongoing or bulk supply, not once-off small runs

If your project fits our manufacturing criteria:

Please email the details below directly to sales@wrb.co.za so we can assess your requirement and quote accurately:

- Company details & contact person
- Delivery address
- Box style & internal dimensions in mm (L x W x H)
- Sample available (yes/no)
- Quantity per order & estimated ongoing volume
- Artwork availability (yes/no)
- Printing requirements
- Desired lead time



WRB

WEST RAND BOX

CONTACT US



SALES OFFICE: 0123721431
SALES DIRECTOR: 0833027389 (ANDRIES)



SALES OFFICE: SALES@WRB.CO.ZA
SALES DIRECTOR: ANDRIES@WRB.CO.ZA



WWW.WRB.CO.ZA



**EXT5, 500 ALFRED BOYES AVE, KIRKNEY, PRETORIA,
0182**



BBBEE LEVEL 4 , 51% BLACK FEMALE OWNED
ISO 9001:2015